

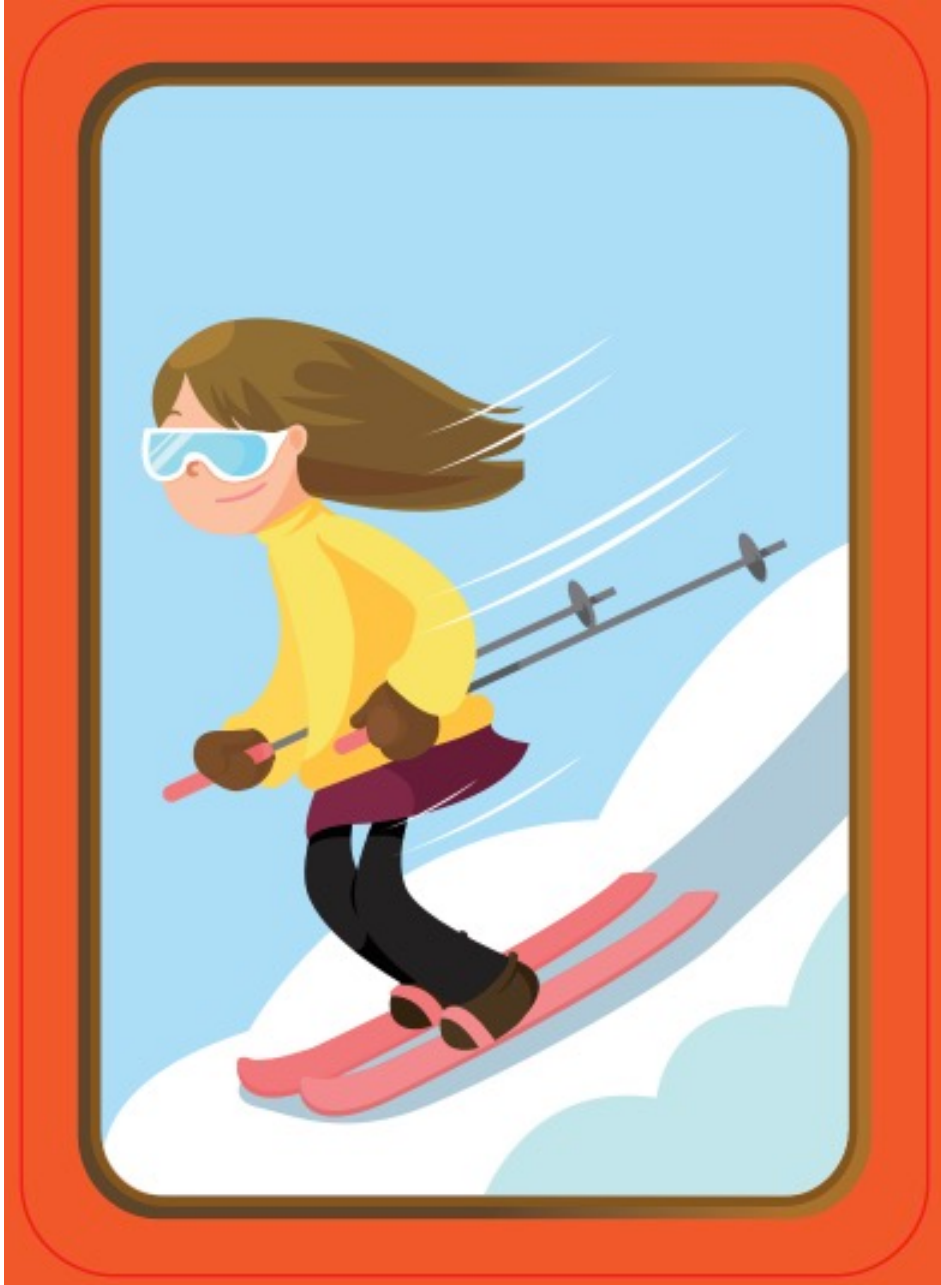
Unit 7.4

# SKI

# 滑雪

We can \_\_\_\_\_ down the  
mountain in winter.

冬天時我們可以到雪山\_\_\_\_\_。



Unit 7.3

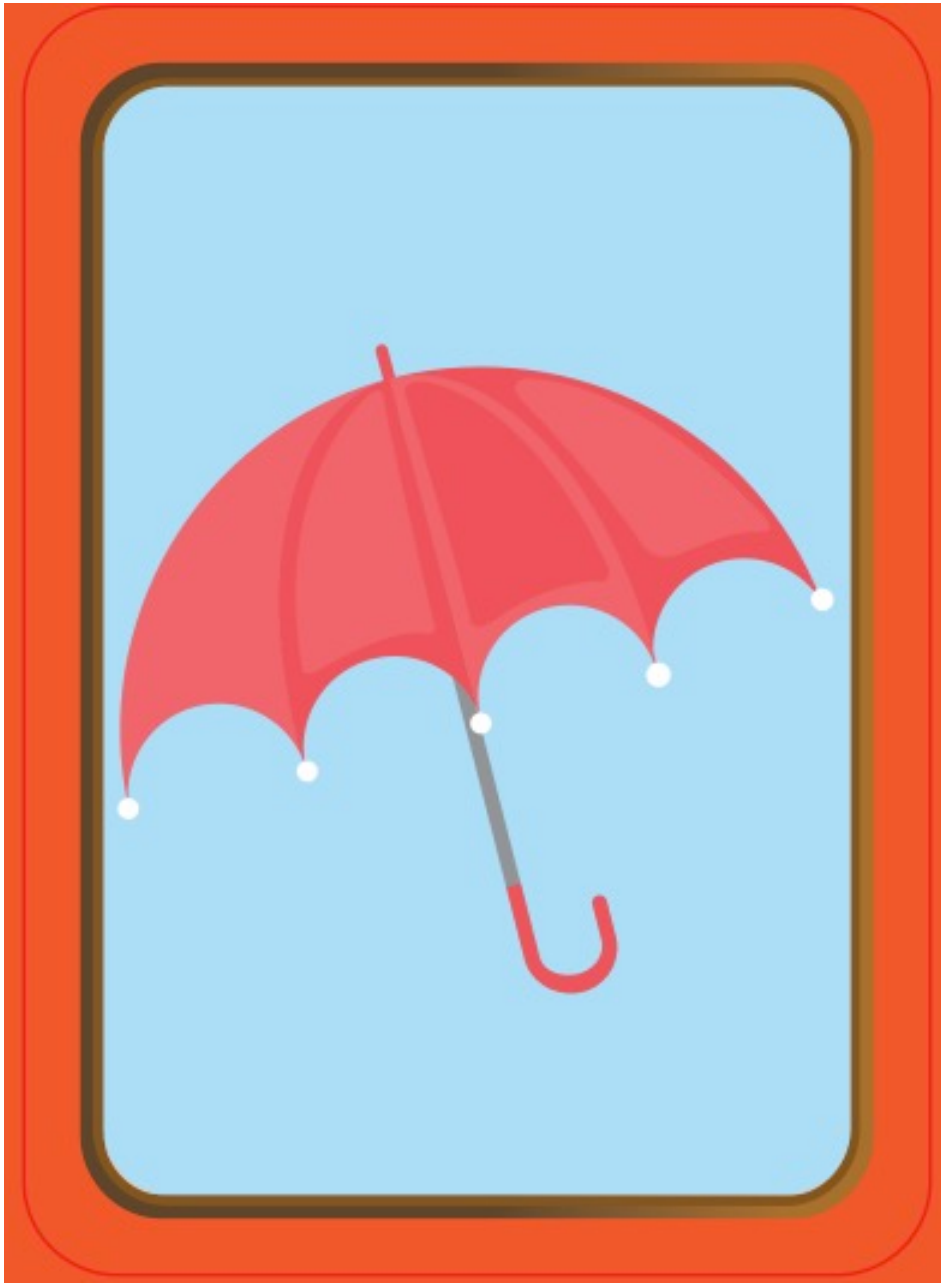
# UMBRELLA

# 雨傘

---

We use this to stay dry when it rains.

我們在雨天時後會撐的。



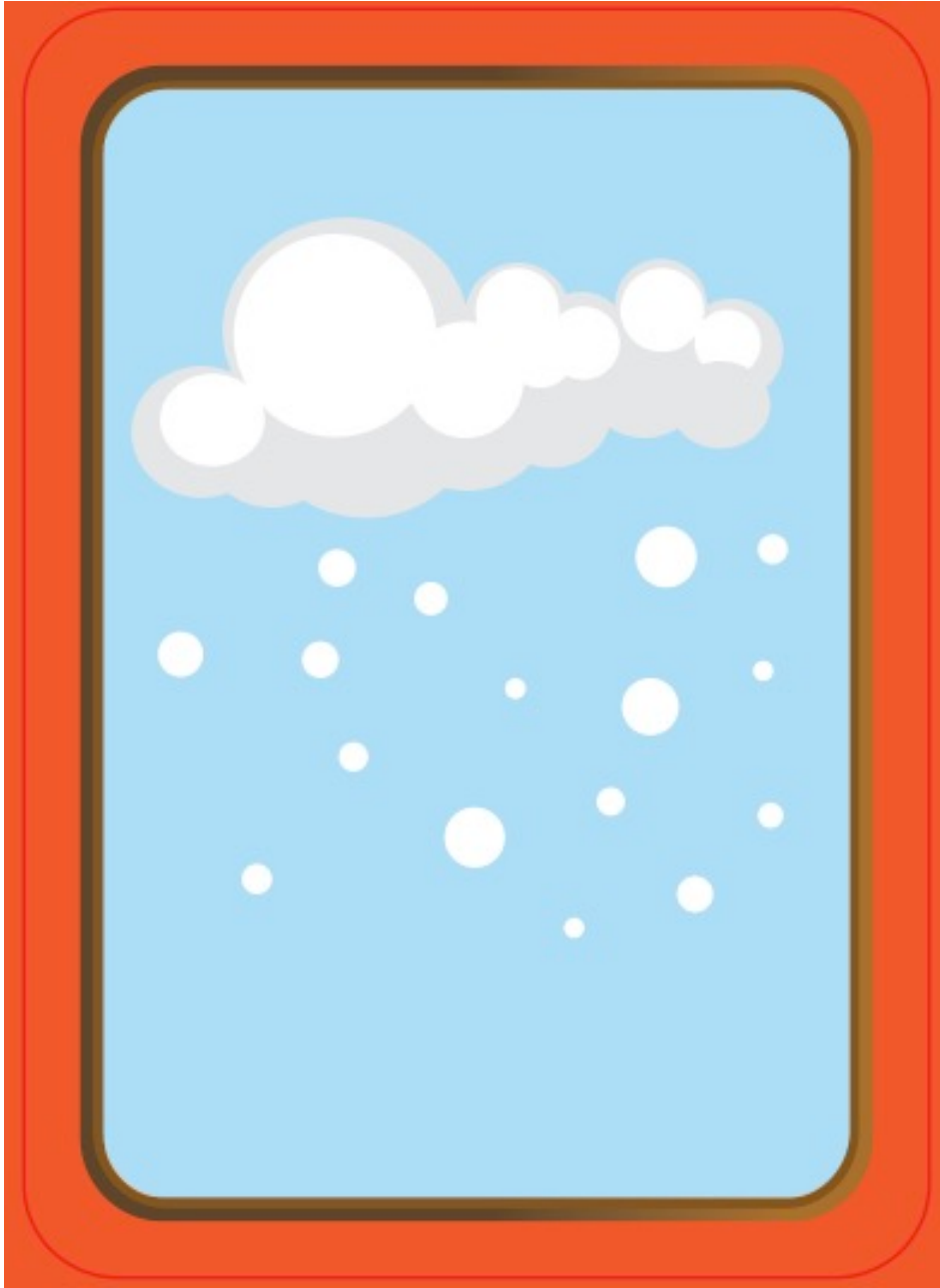
Unit 7.6

# SNOW

## 下雪

In winter, it won't rain, it  
will \_\_\_\_\_.

零下幾度的天氣，下雨會變成\_\_\_\_\_。



Unit 7.11

# ICICLES

## 冰柱

---

When it is very cold, \_\_\_\_\_  
form from dripping water.

天氣太冷的時候，水柱會結冰  
成為\_\_\_\_\_。

